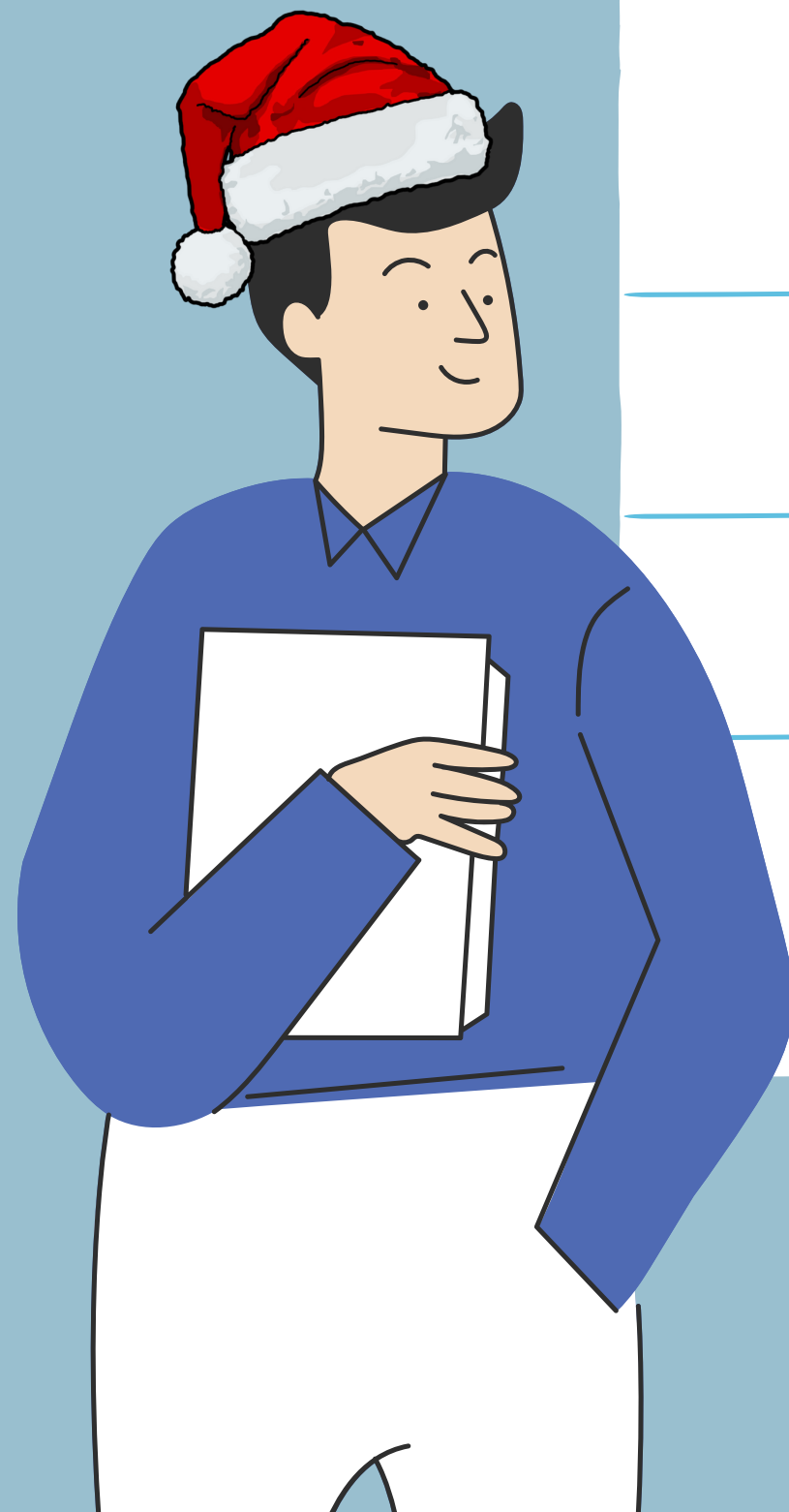




# COVID-19 Updates



CALIFORNIA HEALTH  
COLLABORATIVE



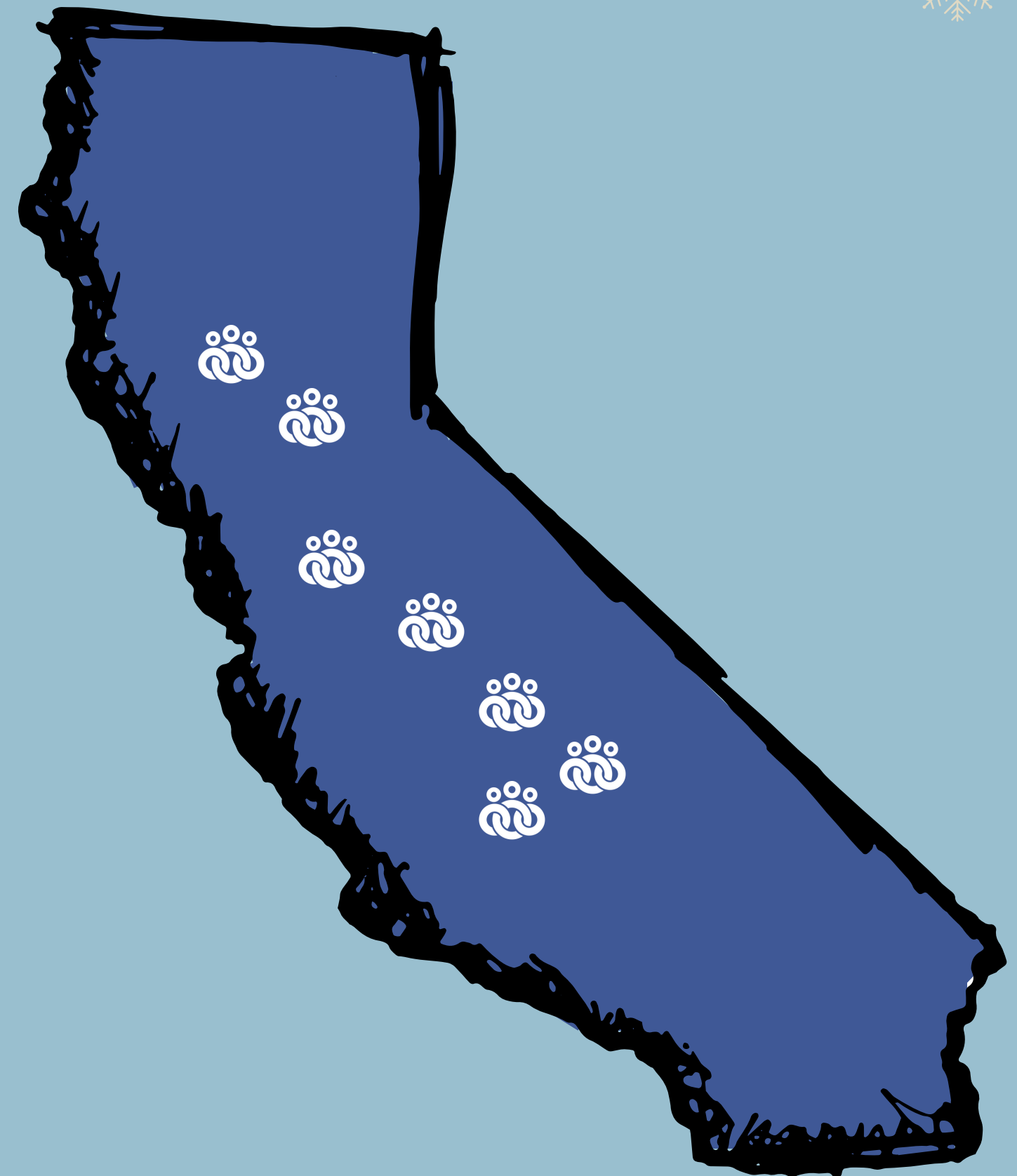
Vaccinate  
ALL 58

# THE CALIFORNIA HEALTH COLLABORATIVE

The California Health Collaborative is a nonprofit 501(c)3 organization committed to enhancing the quality of life and health of the people of California, particularly the underserved and underrepresented.

It was founded in 1982 and is headquartered in Fresno.

Guided by its mission of “changing lives by improving health and wellness,” the Collaborative implements an array of health promotion and disease prevention programs, public health surveillance systems, and a variety of capacity-building and networking activities.





# TODAY'S AGENDA



1

Vaccination Schedule Updates

2

Test-to-Treat Program

3

Resources Recap

# VACCINATION SCHEDULE UPDATES

- COVID-19 Vaccines are now available for everyone 6 months and older
- List of Vaccines available
  - Pfizer
  - Moderna
  - Novavax
  - Jassen
- Booster dose is available for those 5 years and older

## COVID-19 Vaccine Timing

### Routine Schedule

Age*	Vaccine	Primary Doses	Booster Dose
6 months–4 years	<a href="#">Pfizer–Infant/Toddler</a>	1st Dose → 3–8 weeks^ → 2nd Dose → ≥8 weeks → 3rd Dose	
6 months–5 years	<a href="#">Moderna–Infant/Toddler</a>	1st Dose → 4–8 weeks^ → 2nd Dose	
5–11 years	<a href="#">Pfizer–Pediatric</a>	1st Dose → 3–8 weeks^ → 2nd Dose	≥2 months <b>Bivalent Booster</b> <b>Pfizer: Ages 5–11</b> <b>Pfizer: Ages 12+</b> <b>Moderna: Ages 6+</b> (For people who previously received a monovalent booster dose(s), the bivalent booster is administered at least 2 months after the last monovalent booster dose.)  <b>(Monovalent Booster Novavax: Ages 18+)</b> For people who have not received any booster doses and are unable or unwilling to receive bivalent vaccine, monovalent Novavax vaccine may be administered as a single booster dose at least 6 months after completion of the primary series.)
6–11 years	<a href="#">Moderna–Pediatric</a>	1st Dose → 4–8 weeks^ → 2nd Dose	
12+ years	<a href="#">Moderna–Adol/Adult</a>	1st Dose → 4–8 weeks^ → 2nd Dose	
12+ years	<a href="#">Pfizer/Adol/Adult</a>	1st Dose → 3–8 weeks^ → 2nd Dose	
12+ years	<a href="#">Novavax</a>	1st Dose → 3–8 weeks^ → 2nd Dose	
18+ years	<a href="#">Janssen (J&amp;J)</a> Pfizer/Moderna preferred**	1st Dose	

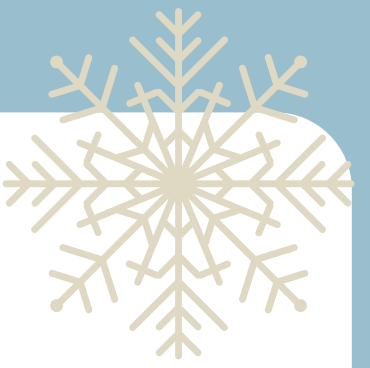
\* See schedules for children in transition from a younger to older age group: [Pfizer](#) | [Moderna](#).

\*\* Although use of mRNA COVID-19 vaccines is preferred, the Janssen vaccine may be offered in [some situations](#).

^ An 8-week interval may be preferable for some people, especially for males 12–39 years.

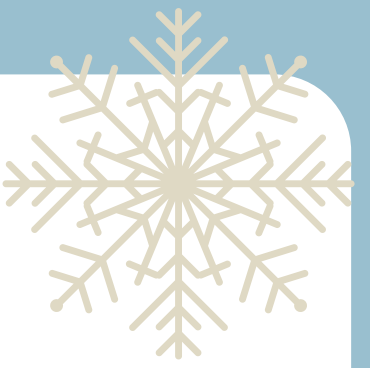
View [Interim Clinical Considerations for Use of COVID-19 Vaccines](#) for details. Schedule is subject to change.

# COVID-19 UPDATED BOOSTER



- 1** Updated (bivalent) boosters became available on October 12, 2022 for people aged 5 and older
- 2** CDC recommends that people ages 5 years and older receive one updated (bivalent) booster if it has been at least 2 months since their last COVID-19 vaccine dose, whether that was:
  - Their final primary series dose, or
  - An original (monovalent) booster
- 3** People who have gotten more than one original (monovalent) booster are also recommended to get an updated (bivalent) booster.





# TEST-TO-TREAT

1

If you test positive for COVID-19, act quickly. There are treatments available, however, they must be taken within 5-7 days of the start of symptoms to work well.

2

What treatments are available?

- COVID-19 treatments options include two oral antiviral pills - Pfizer's Paxlovid and Merck's Lagevrio (molnupiravir) - that can help prevent severe illness and hospitalization when taken soon after symptom onset. You must also be at increased risk of developing severe COVID-19.

3

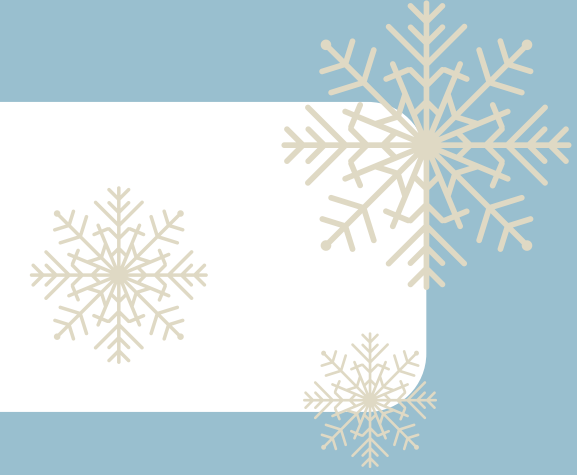
Where can I get treated?

- Visit [sesamecare.com/covidca](https://sesamecare.com/covidca)
- Connect with SESAME for a FREE phone or video visit to see if you should get FREE medicines
- Call (888) 897-1244 to find a test to treat location near you





# RESOURCES



Visit

[MyTurn.ca.gov](https://myturn.ca.gov)

to schedule your vaccine  
appointment today

Call (833) 422-4255

to schedule your vaccine  
appointment today

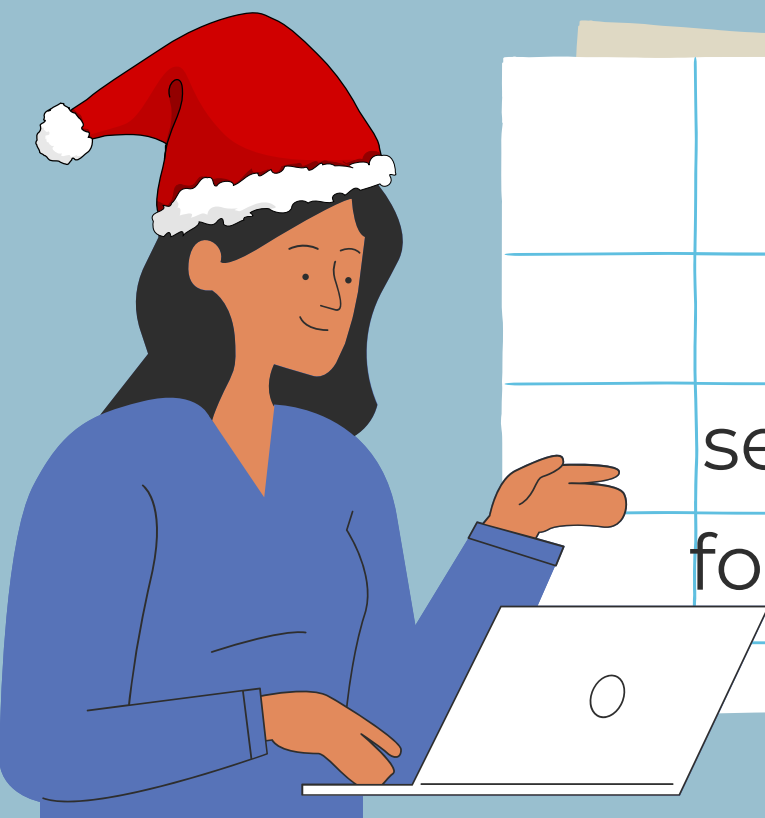
Test-to-treat -

Visit

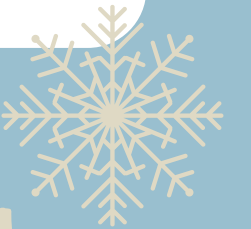
[sesamecare.com/covidca](https://sesamecare.com/covidca)  
for a FREE phone or video  
visit

Spread the word!

Share this information with  
family and friends.



# CONTACTS



	California Health Collaborative
	BEATRIZ ALVAREZ   Outreach Specialist Email   <a href="mailto:balvarez@healthcollaborative.org">balvarez@healthcollaborative.org</a>
	California Health Collaborative
	685 E. Carnegie Drive, Suite 120 San Bernardino, CA 92408 <a href="http://www.healthcollaborative.org">www.healthcollaborative.org</a>

	California Health Collaborative
	CRYSTAL OLIVERA   Program Coordinator Email   <a href="mailto:colivera@healthcollaborative.org">colivera@healthcollaborative.org</a>
	California Health Collaborative
	1680 W. Shaw Avenue Fresno, CA 93711 <a href="http://www.healthcollaborative.org">www.healthcollaborative.org</a>

	California Health Collaborative
	MONIKA GRACIAN   Director of Program Services Email   <a href="mailto:mgracian@healthcollaborative.org">mgracian@healthcollaborative.org</a>
	California Health Collaborative
	685 E. Carnegie Drive, Suite 120 San Bernardino, CA 92408 <a href="http://www.healthcollaborative.org">www.healthcollaborative.org</a>







**THANK  
YOU!**

Let's keep  
each other  
safe this  
season!

